



Запчасти для газовых котлов та колонок Ferroli

КУПИТИ



## DOMIproject C24

LISTA PEZZI DI RICAMBIO

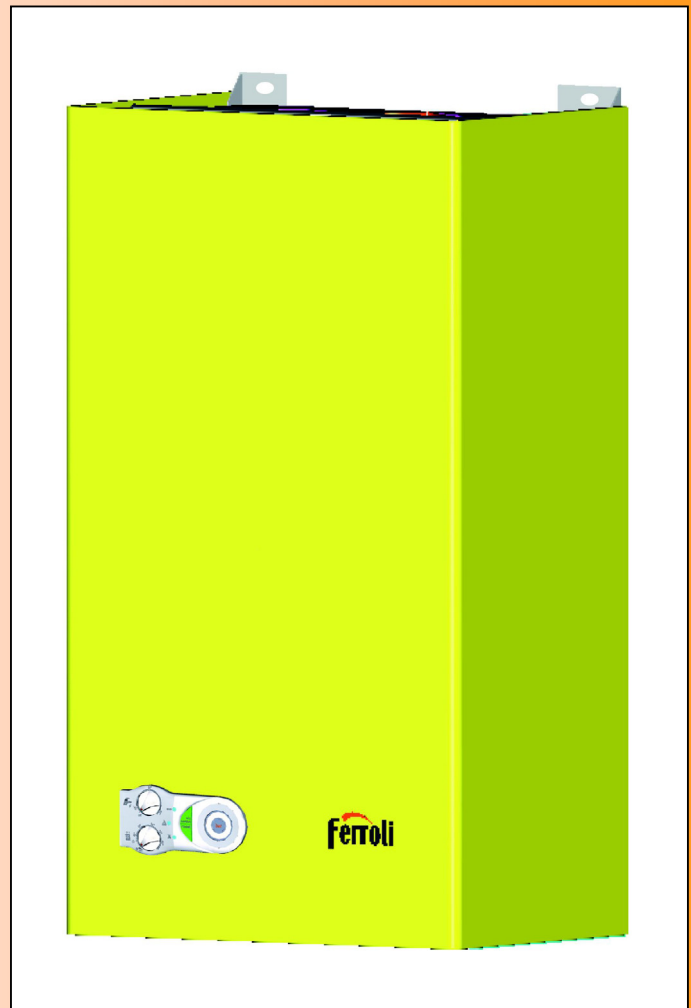
SPARE PART LIST

ERSATZSTEILE

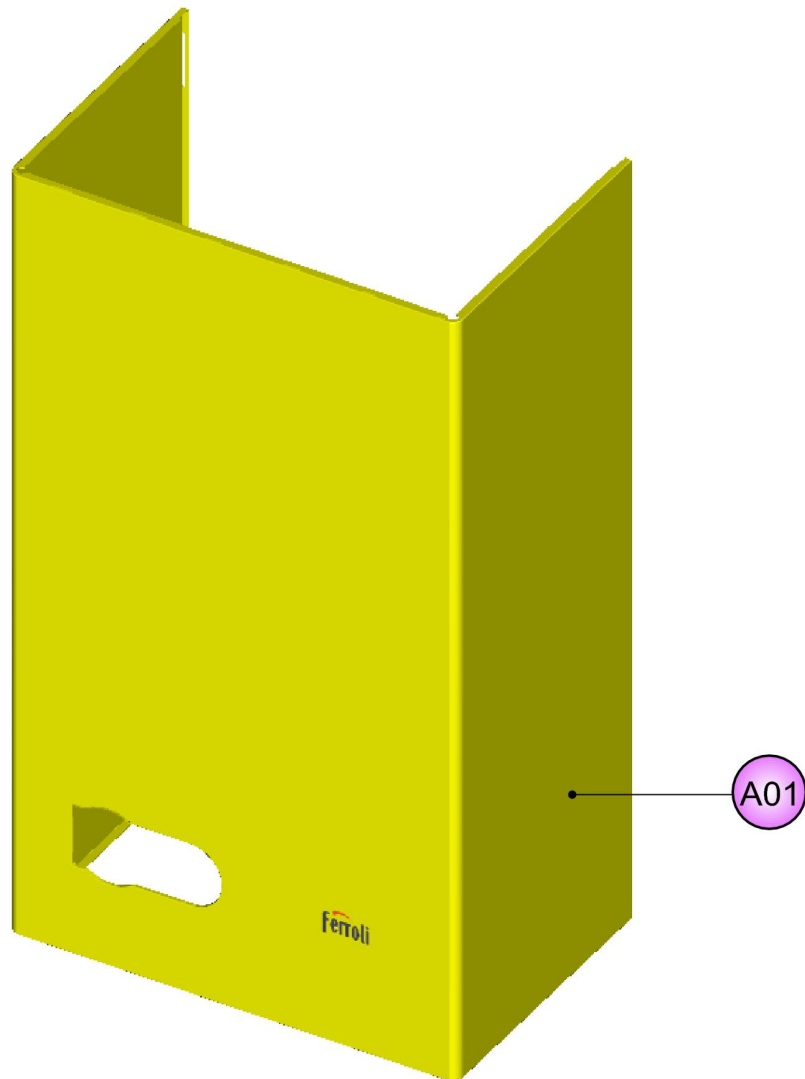
LIJST ONDERDELEN

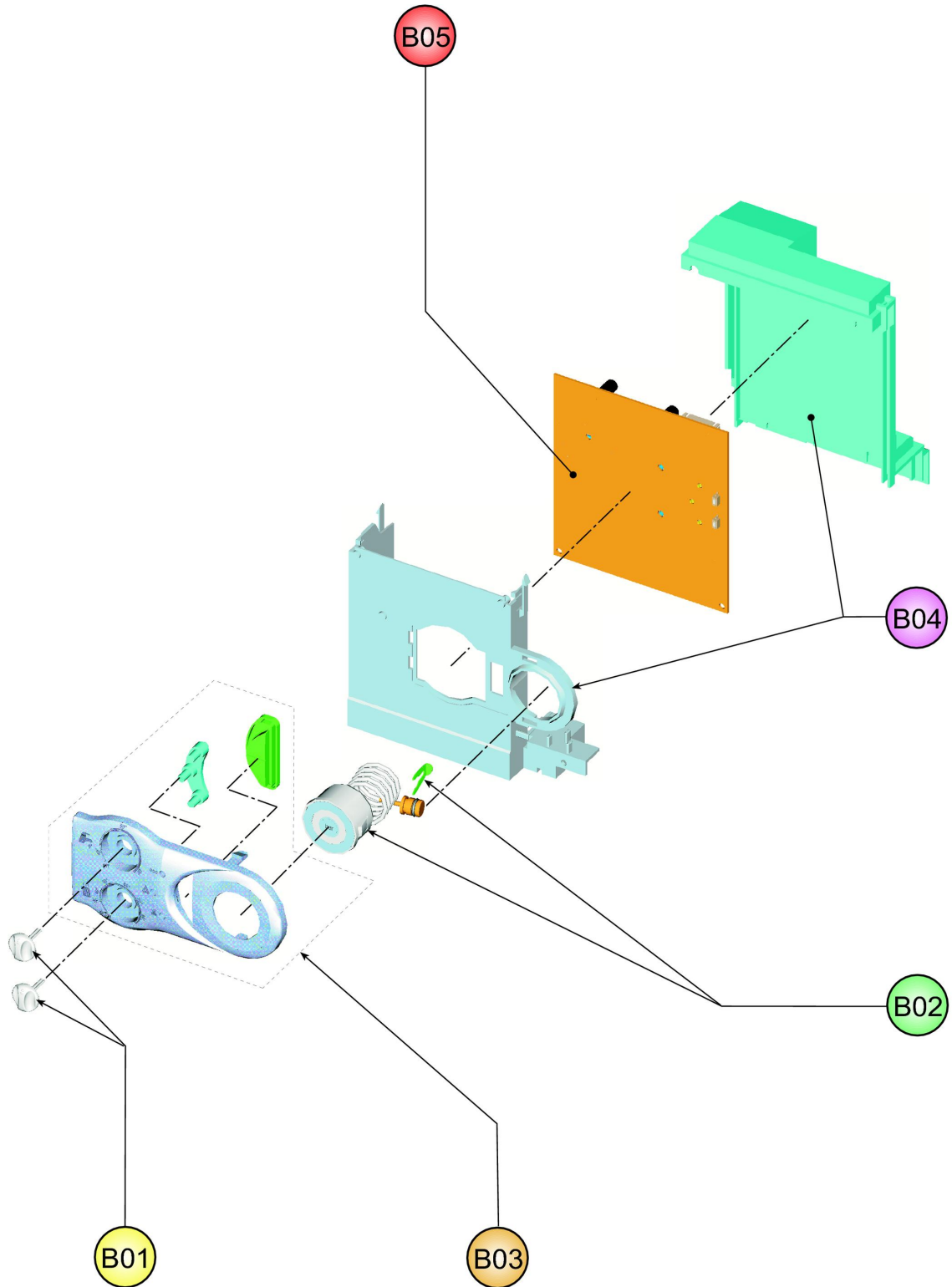
LISTE PIECES DETACHES

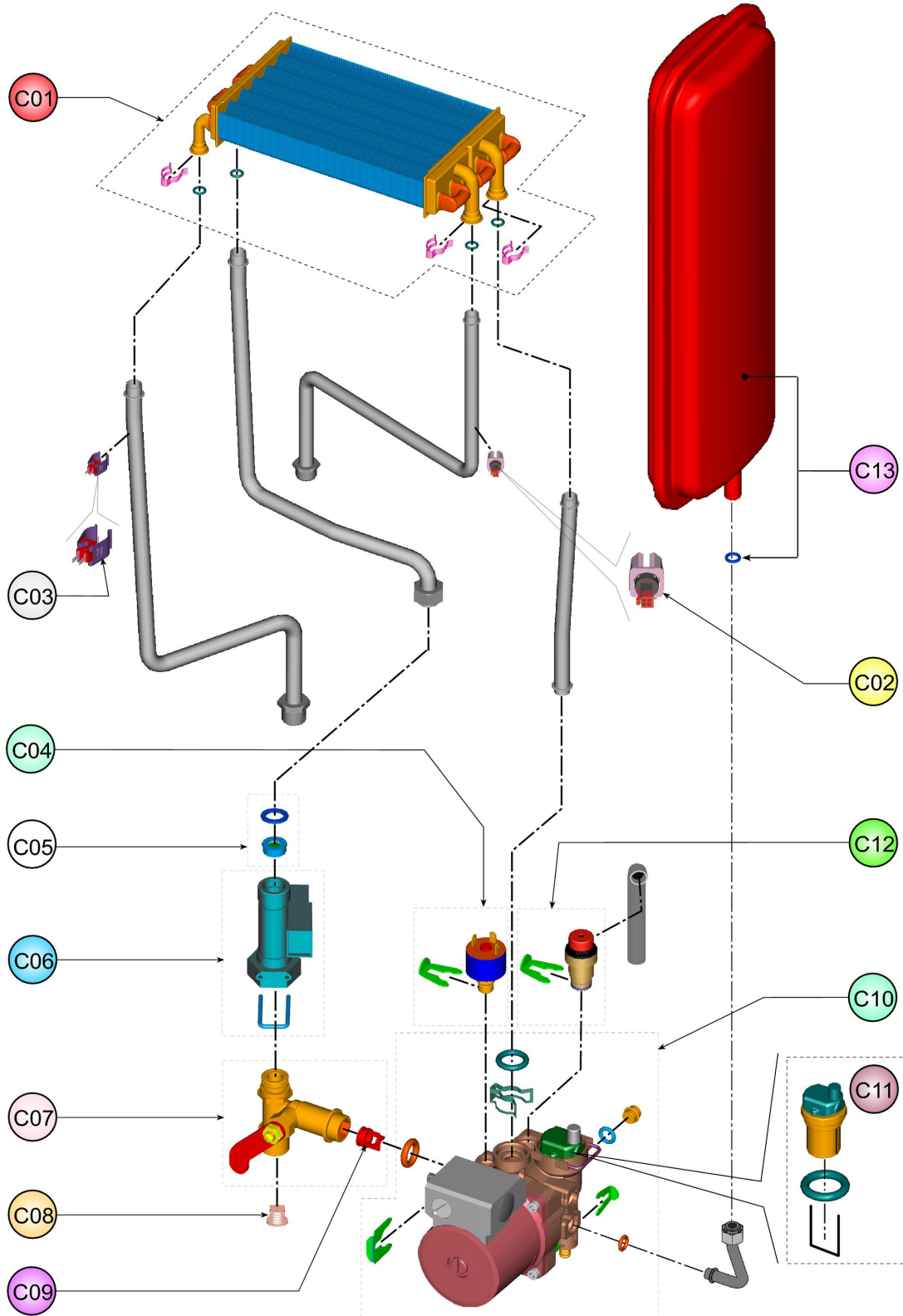
LISTA PIEZAS DE REPUESTO

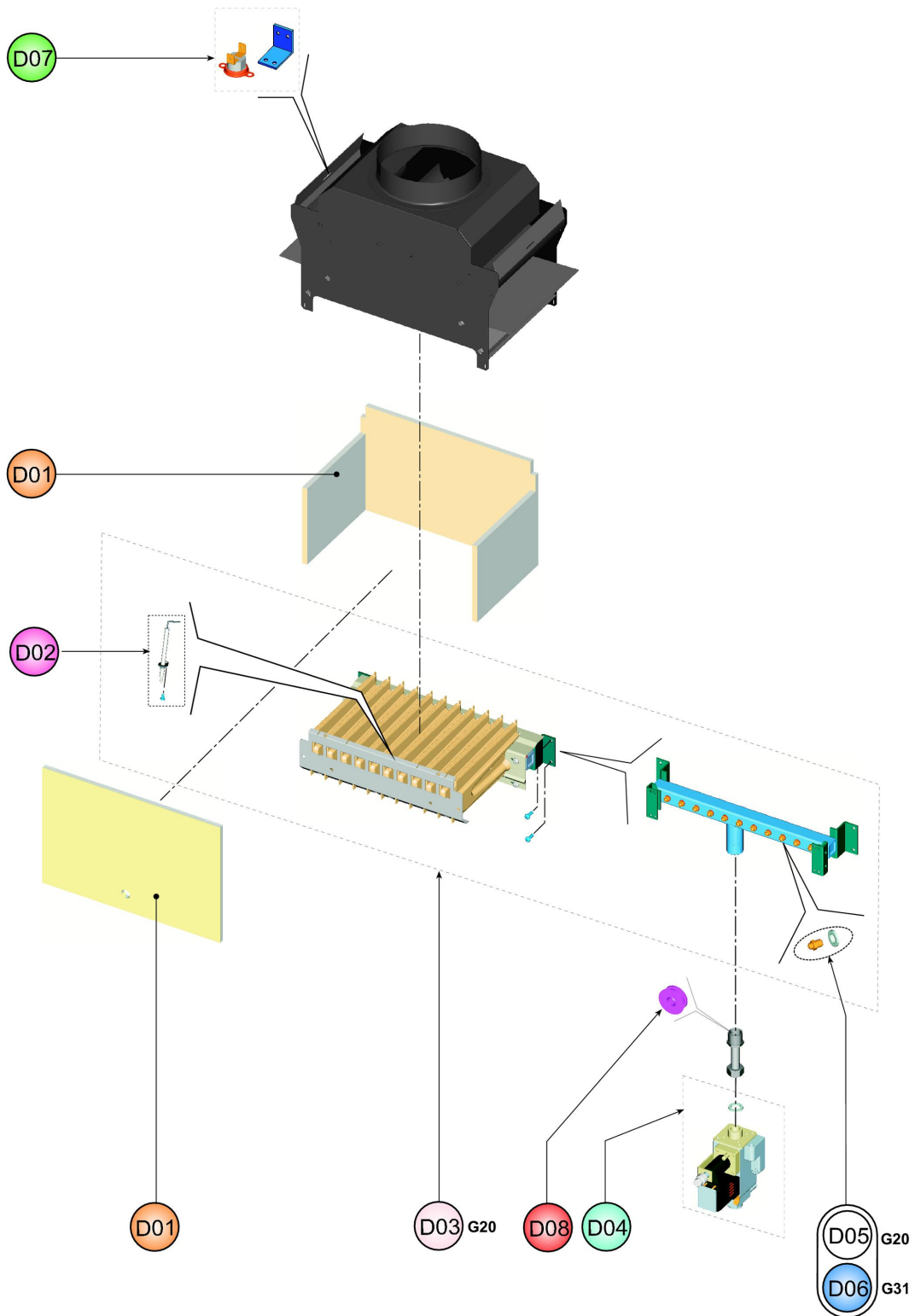


| <b>CODICE</b>     | <b>EDIZIONE</b>   | <b>MERCATO</b>     |
|-------------------|-------------------|--------------------|
| <b>30K0289000</b> | <b>10/05/2006</b> | <b>A2-A3-A4-A5</b> |









**LISTA PEZZI 0ABC4B2A      DOMIproject C24 m. (A2)**

| <b>POS.</b> | <b>CODICE</b> | <b>DESC.</b>                   | <b>QT.</b> |
|-------------|---------------|--------------------------------|------------|
| A01         | 39819490      | KIT MANTELLO (31115950)        | 1          |
| B01         | 39819500      | KIT 2 MANOPOLE (35012090)      | 1          |
| B02         | 39820080      | KIT IDROMETRO (36402190)       | 1          |
| B03         | 39819510      | KIT MASCHERINA (35011990)      | 1          |
| B04         | 39819520      | KIT SCATOLA EL. (35012240)     | 1          |
| B05         | 39819530      | KIT SCHEDA EL. (36507990)      | 1          |
| C01         | 39820060      | KIT SCAMB.BITERM. (37404301)   | 1          |
| C02         | 39819550      | KIT SONDA TEMP. (36200730)     | 1          |
| C03         | 39810230      | KIT SONDA TEMP.SAN. (36200640) | 1          |
| C04         | 39818260      | KIT PRESSOST.H2O (39404710)    | 1          |
| C05         | 39813010      | KIT 5 REG.PORT.10Lt.(36902080) | 1          |
| C06         | 39818550      | KIT FLUSSOST.ELTEK (36400710)  | 1          |
| C07         | 39819560      | KIT RUBIN.CARICO (36902140)    | 1          |
| C08         | 39813230      | KIT 5 FILTRI FLUSS. (39402940) | 1          |
| C09         | 39818230      | KIT 5 VALV.N/R (39404740)      | 1          |
| C10         | 39818450      | KIT POMPA AO/FX3FPL (39404220) | 1          |
| C11         | 39818220      | KIT V.ARIA (39404380-39404730) | 1          |
| C12         | 39818270      | KIT VALV.SIC. (39404720)       | 1          |
| C13         | 39819570      | KIT VASO ESP.6Lt. (36800650)   | 1          |
| D01         | 39820070      | KIT ISOL.CAM.COMB. Sr.ABC4     | 1          |
| D02         | 39819430      | KIT ELETTRODO ACC. (36702890)  | 1          |
| D03         | 39819630      | KIT BRUC.11R.m. (37608910)     | 1          |
| D04         | 39819620      | KIT VALV.GAS (36800610)        | 1          |
| D05         | 39819590      | KIT 11 UG.1,35 m. (34009821)   | 1          |
| D07         | 39807510      | KIT TST.FUMI COMPL. (38318560) | 1          |
| D08         | 39809960      | KIT 10 DIAFRAM.D.5,0(34012790) | 1          |

| <b>LISTA PEZZI 0ABC4B3A</b> |               | <b>DOMIproject C24 m. (A3)</b> |            |
|-----------------------------|---------------|--------------------------------|------------|
| <b>POS.</b>                 | <b>CODICE</b> | <b>DESC.</b>                   | <b>QT.</b> |
| A01                         | 39819490      | KIT MANTELLO (31115950)        | 1          |
| B01                         | 39819500      | KIT 2 MANOPOLE (35012090)      | 1          |
| B02                         | 39820080      | KIT IDROMETRO (36402190)       | 1          |
| B03                         | 39819510      | KIT MASCHERINA (35011990)      | 1          |
| B04                         | 39819520      | KIT SCATOLA EL. (35012240)     | 1          |
| B05                         | 39819530      | KIT SCHEDA EL. (36507990)      | 1          |
| C01                         | 39820060      | KIT SCAMB.BITERM. (37404301)   | 1          |
| C02                         | 39819550      | KIT SONDA TEMP. (36200730)     | 1          |
| C03                         | 39810230      | KIT SONDA TEMP.SAN. (36200640) | 1          |
| C04                         | 39818260      | KIT PRESSOST.H2O (39404710)    | 1          |
| C05                         | 39813010      | KIT 5 REG.PORT.10Lt.(36902080) | 1          |
| C06                         | 39818550      | KIT FLUSSOST.ELTEK (36400710)  | 1          |
| C07                         | 39819560      | KIT RUBIN.CARICO (36902140)    | 1          |
| C08                         | 39813230      | KIT 5 FILTRI FLUSS. (39402940) | 1          |
| C09                         | 39818230      | KIT 5 VALV.N/R (39404740)      | 1          |
| C10                         | 39818450      | KIT POMPA AO/FX3FPL (39404220) | 1          |
| C11                         | 39818220      | KIT V.ARIA (39404380-39404730) | 1          |
| C12                         | 39818270      | KIT VALV.SIC. (39404720)       | 1          |
| C13                         | 39819570      | KIT VASO ESP.6Lt. (36800650)   | 1          |
| D01                         | 39820070      | KIT ISOL.CAM.COMB. Sr.ABC4     | 1          |
| D02                         | 39819430      | KIT ELETTRODO ACC. (36702890)  | 1          |
| D03                         | 39819630      | KIT BRUC.11R.m. (37608910)     | 1          |
| D04                         | 39819620      | KIT VALV.GAS (36800610)        | 1          |
| D05                         | 39819590      | KIT 11 UG.1,35 m. (34009821)   | 1          |
| D07                         | 39807510      | KIT TST.FUMI COMPL. (38318560) | 1          |
| D08                         | 39809960      | KIT 10 DIAFRAM.D.5,0(34012790) | 1          |

| <b>LISTA PEZZI 0ABC4B4A</b> |               | <b>DOMIproject C24 m. (A4)</b> |            |
|-----------------------------|---------------|--------------------------------|------------|
| <b>POS.</b>                 | <b>CODICE</b> | <b>DESC.</b>                   | <b>QT.</b> |
| A01                         | 39819490      | KIT MANTELLO (31115950)        | 1          |
| B01                         | 39819500      | KIT 2 MANOPOLE (35012090)      | 1          |
| B02                         | 39820080      | KIT IDROMETRO (36402190)       | 1          |
| B03                         | 39819510      | KIT MASCHERINA (35011990)      | 1          |
| B04                         | 39819520      | KIT SCATOLA EL. (35012240)     | 1          |
| B05                         | 39819530      | KIT SCHEDA EL. (36507990)      | 1          |
| C01                         | 39820060      | KIT SCAMB.BITERM. (37404301)   | 1          |
| C02                         | 39819550      | KIT SONDA TEMP. (36200730)     | 1          |
| C03                         | 39810230      | KIT SONDA TEMP.SAN. (36200640) | 1          |
| C04                         | 39818260      | KIT PRESSOST.H2O (39404710)    | 1          |
| C05                         | 39813010      | KIT 5 REG.PORT.10Lt.(36902080) | 1          |
| C06                         | 39818550      | KIT FLUSSOST.ELTEK (36400710)  | 1          |
| C07                         | 39819560      | KIT RUBIN.CARICO (36902140)    | 1          |
| C08                         | 39813230      | KIT 5 FILTRI FLUSS. (39402940) | 1          |
| C09                         | 39818230      | KIT 5 VALV.N/R (39404740)      | 1          |
| C10                         | 39818450      | KIT POMPA AO/FX3FPL (39404220) | 1          |
| C11                         | 39818220      | KIT V.ARIA (39404380-39404730) | 1          |
| C12                         | 39818270      | KIT VALV.SIC. (39404720)       | 1          |
| C13                         | 39819570      | KIT VASO ESP.6Lt. (36800650)   | 1          |
| D01                         | 39820070      | KIT ISOL.CAM.COMB. Sr.ABC4     | 1          |
| D02                         | 39819430      | KIT ELETTRODO ACC. (36702890)  | 1          |
| D03                         | 39819630      | KIT BRUC.11R.m. (37608910)     | 1          |
| D04                         | 39819620      | KIT VALV.GAS (36800610)        | 1          |
| D05                         | 39819590      | KIT 11 UG.1,35 m. (34009821)   | 1          |
| D07                         | 39807510      | KIT TST.FUMI COMPL. (38318560) | 1          |
| D08                         | 39809960      | KIT 10 DIAFRAM.D.5,0(34012790) | 1          |

| <b>LISTA PEZZI 0ABC4B5A</b> |               | <b>DOMIproject C24 m. (A5)</b> |            |
|-----------------------------|---------------|--------------------------------|------------|
| <b>POS.</b>                 | <b>CODICE</b> | <b>DESC.</b>                   | <b>QT.</b> |
| A01                         | 39819490      | KIT MANTELLO (31115950)        | 1          |
| B01                         | 39819500      | KIT 2 MANOPOLE (35012090)      | 1          |
| B02                         | 39820080      | KIT IDROMETRO (36402190)       | 1          |
| B03                         | 39819510      | KIT MASCHERINA (35011990)      | 1          |
| B04                         | 39819520      | KIT SCATOLA EL. (35012240)     | 1          |
| B05                         | 39819530      | KIT SCHEDA EL. (36507990)      | 1          |
| C01                         | 39820060      | KIT SCAMB.BITERM. (37404301)   | 1          |
| C02                         | 39819550      | KIT SONDA TEMP. (36200730)     | 1          |
| C03                         | 39810230      | KIT SONDA TEMP.SAN. (36200640) | 1          |
| C04                         | 39818260      | KIT PRESSOST.H2O (39404710)    | 1          |
| C05                         | 39813010      | KIT 5 REG.PORT.10Lt.(36902080) | 1          |
| C06                         | 39818550      | KIT FLUSSOST.ELTEK (36400710)  | 1          |
| C07                         | 39819560      | KIT RUBIN.CARICO (36902140)    | 1          |
| C08                         | 39813230      | KIT 5 FILTRI FLUSS. (39402940) | 1          |
| C09                         | 39818230      | KIT 5 VALV.N/R (39404740)      | 1          |
| C10                         | 39818450      | KIT POMPA AO/FX3FPL (39404220) | 1          |
| C11                         | 39818220      | KIT V.ARIA (39404380-39404730) | 1          |
| C12                         | 39818270      | KIT VALV.SIC. (39404720)       | 1          |
| C13                         | 39819570      | KIT VASO ESP.6Lt. (36800650)   | 1          |
| D01                         | 39820070      | KIT ISOL.CAM.COMB. Sr.ABC4     | 1          |
| D02                         | 39819430      | KIT ELETTRODO ACC. (36702890)  | 1          |
| D03                         | 39819630      | KIT BRUC.11R.m. (37608910)     | 1          |
| D04                         | 39819620      | KIT VALV.GAS (36800610)        | 1          |
| D05                         | 39819590      | KIT 11 UG.1,35 m. (34009821)   | 1          |
| D07                         | 39807510      | KIT TST.FUMI COMPL. (38318560) | 1          |
| D08                         | 39809960      | KIT 10 DIAFRAM.D.5,0(34012790) | 1          |

| <b>LISTA PEZZI 0ABC4D2A</b> |               | <b>DOMIproject C24 gpl (A2)</b> |            |
|-----------------------------|---------------|---------------------------------|------------|
| <b>POS.</b>                 | <b>CODICE</b> | <b>DESC.</b>                    | <b>QT.</b> |
| A01                         | 39819490      | KIT MANTELLO (31115950)         | 1          |
| B01                         | 39819500      | KIT 2 MANOPOLE (35012090)       | 1          |
| B02                         | 39820080      | KIT IDROMETRO (36402190)        | 1          |
| B03                         | 39819510      | KIT MASCHERINA (35011990)       | 1          |
| B04                         | 39819520      | KIT SCATOLA EL. (35012240)      | 1          |
| B05                         | 39819530      | KIT SCHEDA EL. (36507990)       | 1          |
| C01                         | 39820060      | KIT SCAMB.BITERM. (37404301)    | 1          |
| C02                         | 39819550      | KIT SONDA TEMP. (36200730)      | 1          |
| C03                         | 39810230      | KIT SONDA TEMP.SAN. (36200640)  | 1          |
| C04                         | 39818260      | KIT PRESSOST.H2O (39404710)     | 1          |
| C05                         | 39813010      | KIT 5 REG.PORT.10Lt.(36902080)  | 1          |
| C06                         | 39818550      | KIT FLUSSOST.ELTEK (36400710)   | 1          |
| C07                         | 39819560      | KIT RUBIN.CARICO (36902140)     | 1          |
| C08                         | 39813230      | KIT 5 FILTRI FLUSS. (39402940)  | 1          |
| C09                         | 39818230      | KIT 5 VALV.N/R (39404740)       | 1          |
| C10                         | 39818450      | KIT POMPA AO/FX3FPL (39404220)  | 1          |
| C11                         | 39818220      | KIT V.ARIA (39404380-39404730)  | 1          |
| C12                         | 39818270      | KIT VALV.SIC. (39404720)        | 1          |
| C13                         | 39819570      | KIT VASO ESP.6Lt. (36800650)    | 1          |
| D01                         | 39820070      | KIT ISOL.CAM.COMB. Sr.ABC4      | 1          |
| D02                         | 39819430      | KIT ELETTRODO ACC. (36702890)   | 1          |
| D04                         | 39819620      | KIT VALV.GAS (36800610)         | 1          |
| D06                         | 39819600      | KIT 11 UG.0,79 gpl (34013300)   | 1          |
| D07                         | 39807510      | KIT TST.FUMI COMPL. (38318560)  | 1          |