



Запчасти для газовых котлов та колонок Ferroli

КУПИТИ



DOMIproject F32

LISTA PEZZI DI RICAMBIO

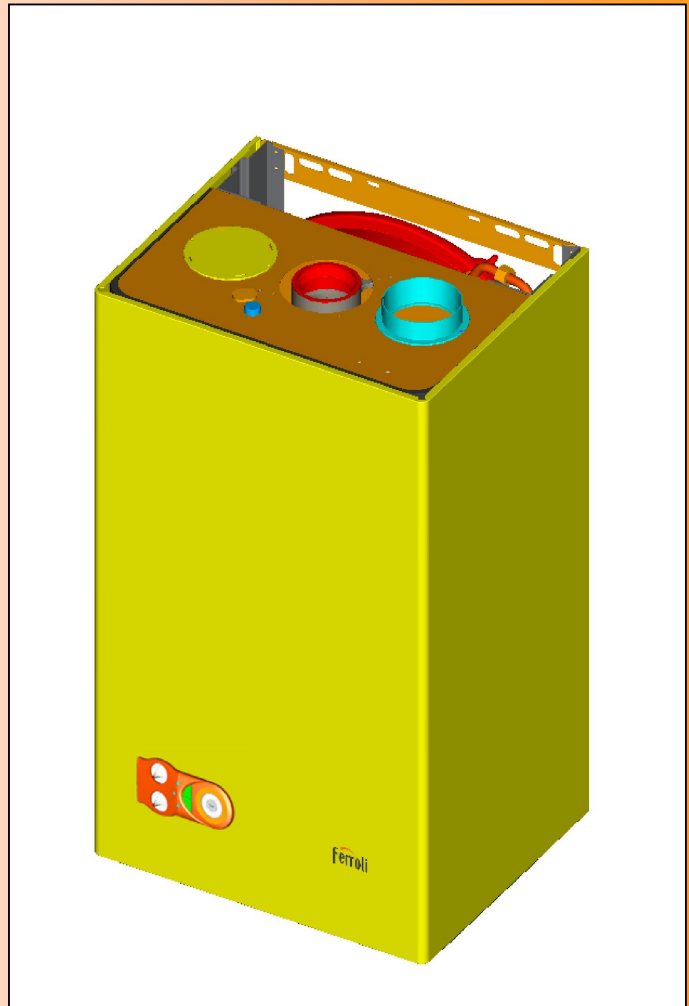
SPARE PART LIST

ERSATZSTEILE

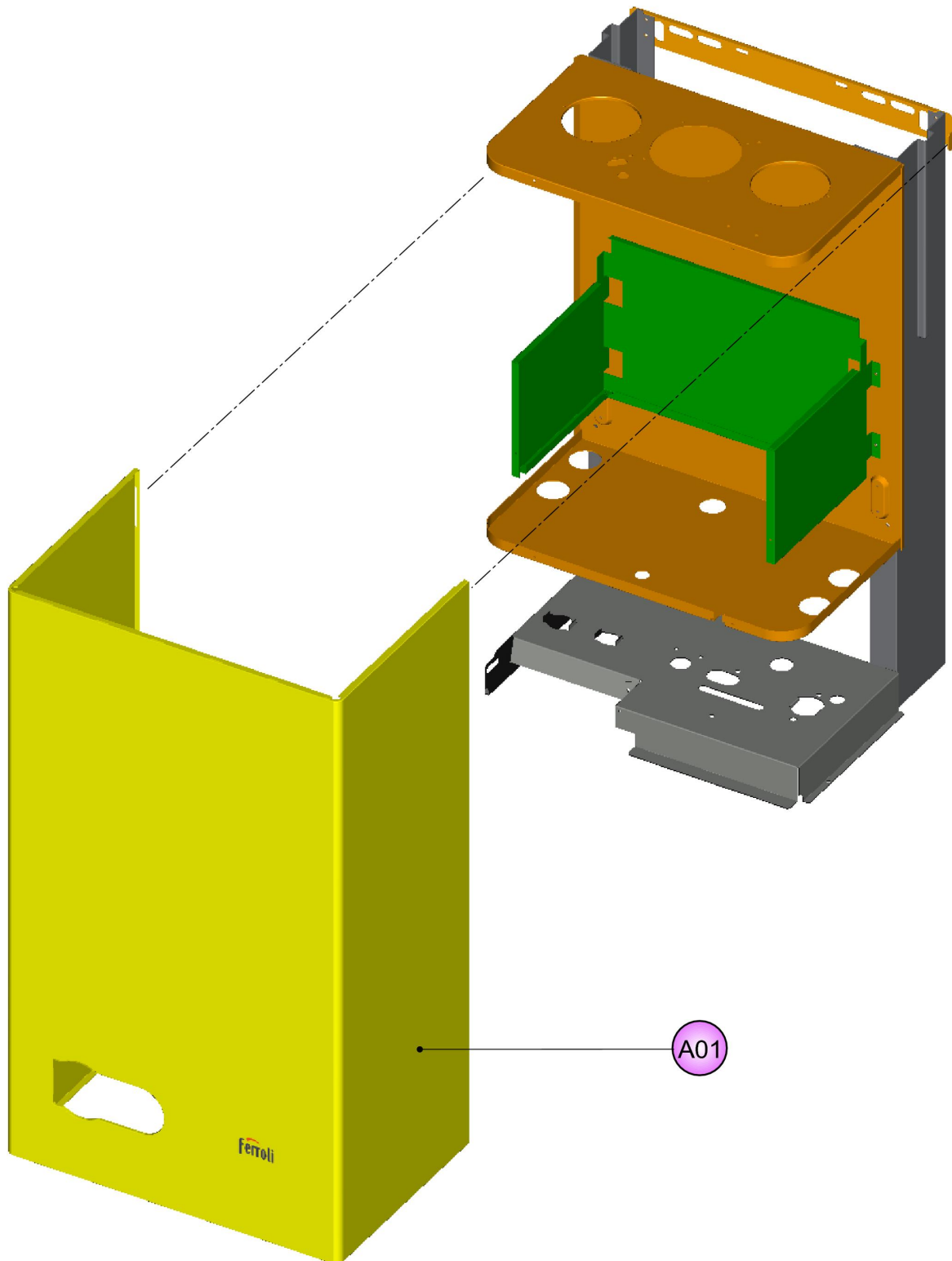
LIJST ONDERDELEN

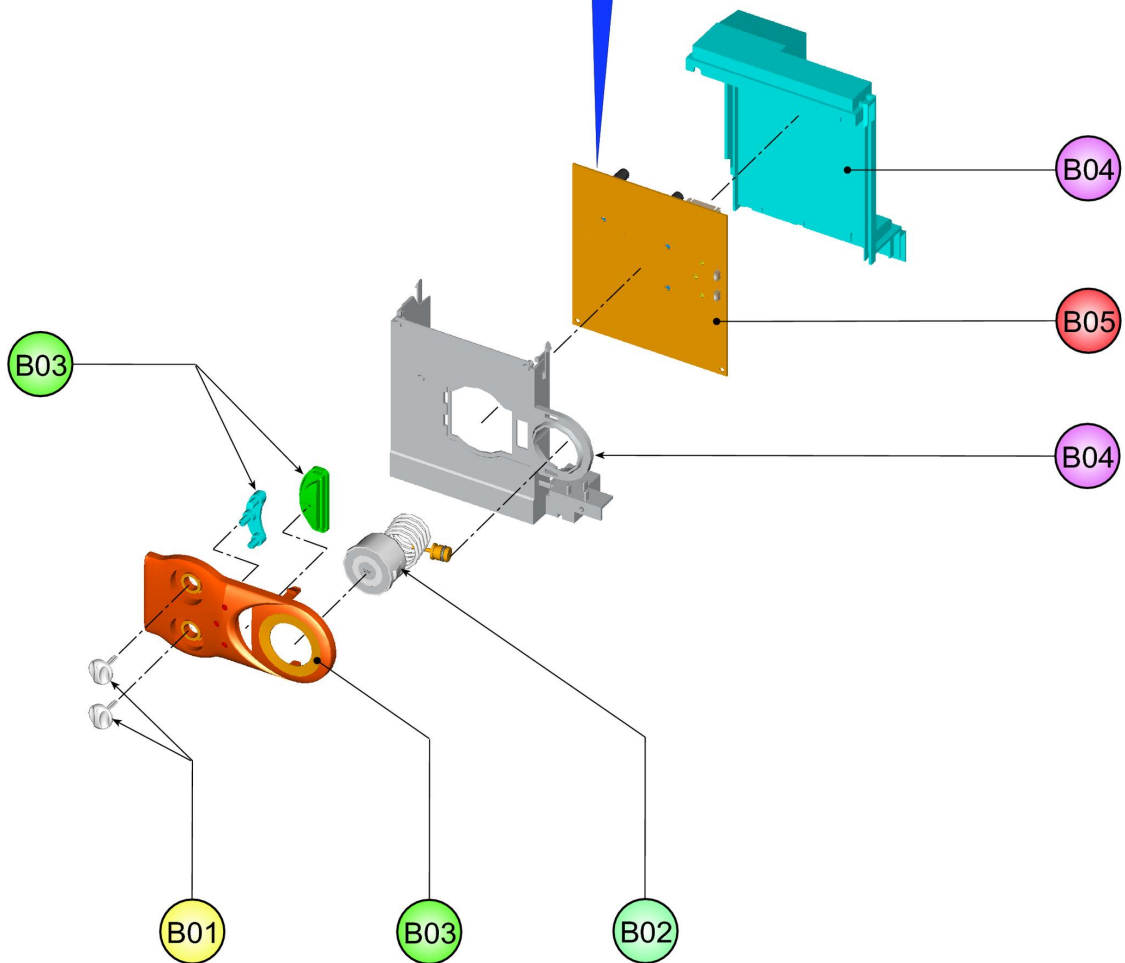
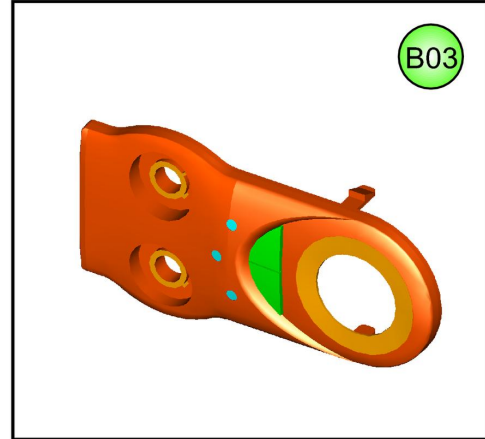
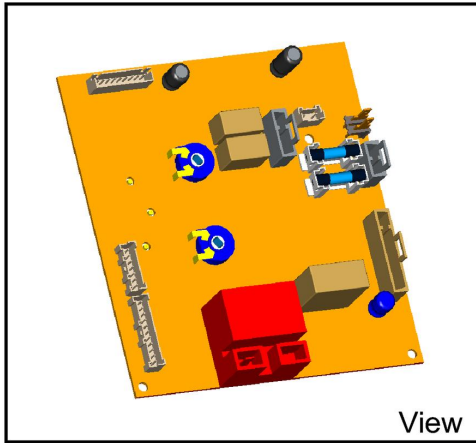
LISTE PIECES DETACHES

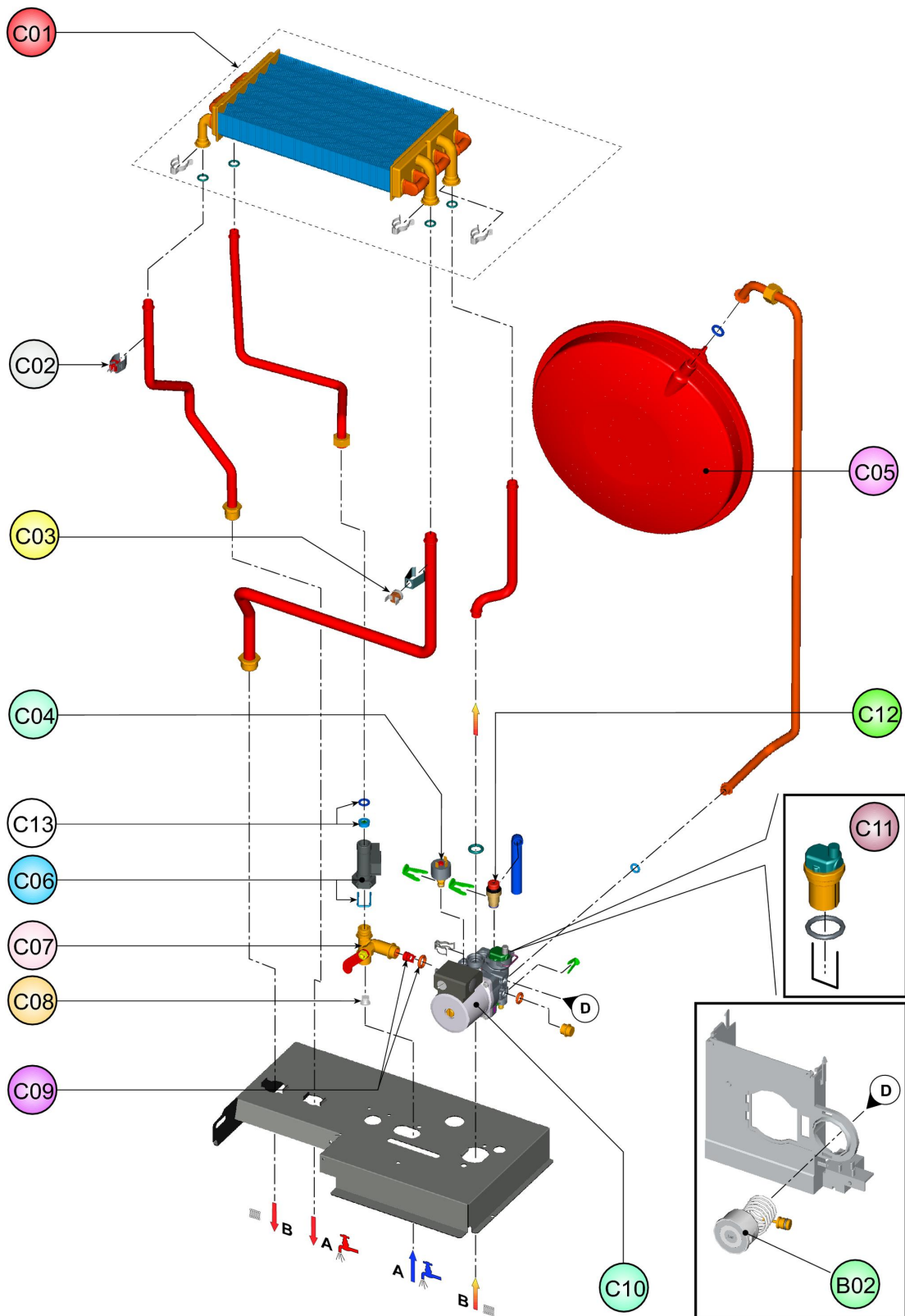
LISTA PIEZAS DE REPUESTO

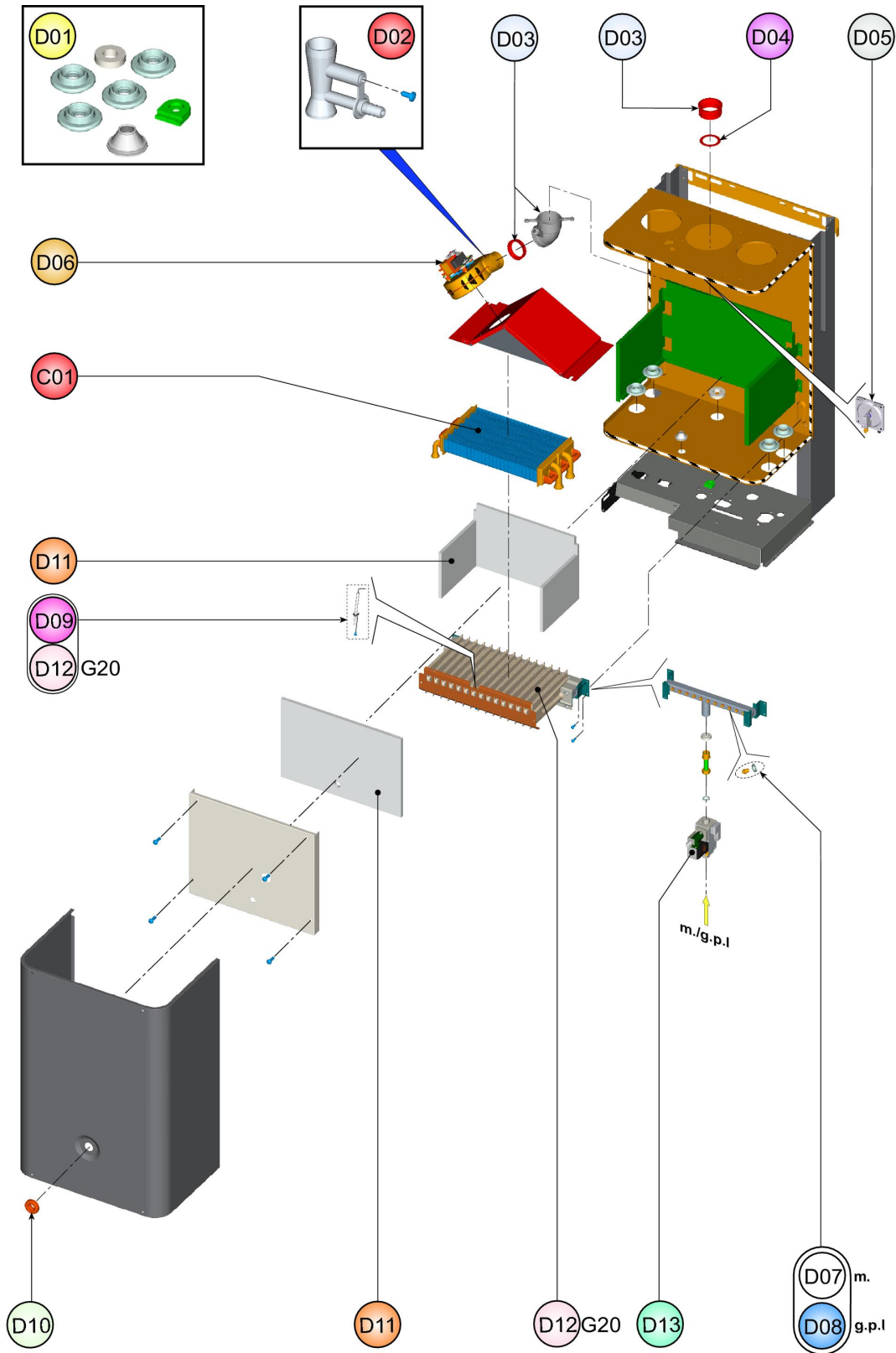


CODICE	EDIZIONE	MERCATO
30K0283000	13/02/2006	A2-A3-A4-A5









LISTA PEZZI 0ABF7B2A		DOMIproject F32 m. (A2)	
POS.	CODICE	DESC.	QT.
A01	39819660	KIT MANTELLO (31115970)	1
B01	39819500	KIT 2 MANOPOLE (35012090)	1
B02	39818210	KIT IDROMETRO (36402070)	1
B03	39819510	KIT MASCHERINA (35011990)	1
B04	39819520	KIT SCATOLA EL. (35012240)	1
B05	39819530	KIT SCHEDA EL. (36507990)	1
C01	39819670	KIT SCAMB.BITERM. (37404120)	1
C02	39819550	KIT SONDA TEMP. (36200730)	1
C03	39810230	KIT SONDA TEMP.SAN. (36200640)	1
C04	39818260	KIT PRESSOST.H2O (39404710)	1
C05	39809690	KIT VASO ESP.10Lt. (36802740)	1
C06	39818550	KIT FLUSSOST.ELTEK (36400710)	1
C07	39818280	KIT RUBIN.CARICO (36902150)	1
C08	39813230	KIT 5 FILTRI FLUSS. (39402940)	1
C09	39818230	KIT 5 VALV.N/R (39404740)	1
C10	39818450	KIT POMPA AO/FX3FPL (39404220)	1
C11	39818220	KIT V.ARIA (39404380-39404730)	1
C12	39818270	KIT VALV.SIC. (39404720)	1
C13	39813220	KIT 5 REG.PORT.15Lt. (36902100)	1
D01	39819680	KIT GUARN.CALD. Sr.ABF7	1
D02	39808471	KIT PRESE (35101310-35101323)	1
D03	39817990	KIT CURVA USC.FUMI (33301610)	1
D04	39819690	KIT DIAFR.FUMI (32700870-890)	1
D05	39817510	KIT PRESS.DIFF.ARIA (36402050)	1
D06	39818020	KIT VENTIL. (36601871)	1
D07	39819700	KIT 15 UG.1,35 m. (34009821)	1
D09	39819430	KIT ELETTRODO ACC. (36702890)	1
D10	39811330	KIT SPIA SILICONE (35102230)	1
D11	39819720	KIT ISOL.CAM.COMB. Sr.ABF7	1
D12	39819730	KIT BRUC.15R.m. (37608930)	1
D13	39819620	KIT VALV.GAS (36800610)	1

LISTA PEZZI 0ABF7B3A		DOMIproject F32 m. (A3)	
POS.	CODICE	DESC.	QT.
A01	39819660	KIT MANTELLO (31115970)	1
B01	39819500	KIT 2 MANOPOLE (35012090)	1
B02	39818210	KIT IDROMETRO (36402070)	1
B03	39819510	KIT MASCHERINA (35011990)	1
B04	39819520	KIT SCATOLA EL. (35012240)	1
B05	39819530	KIT SCHEDA EL. (36507990)	1
C01	39819670	KIT SCAMB.BITERM. (37404120)	1
C02	39819550	KIT SONDA TEMP. (36200730)	1
C03	39810230	KIT SONDA TEMP.SAN. (36200640)	1
C04	39818260	KIT PRESSOST.H2O (39404710)	1
C05	39809690	KIT VASO ESP.10Lt. (36802740)	1
C06	39818550	KIT FLUSSOST.ELTEK (36400710)	1
C07	39818280	KIT RUBIN.CARICO (36902150)	1
C08	39813230	KIT 5 FILTRI FLUSS. (39402940)	1
C09	39818230	KIT 5 VALV.N/R (39404740)	1
C10	39818450	KIT POMPA AO/FX3FPL (39404220)	1
C11	39818220	KIT V.ARIA (39404380-39404730)	1
C12	39818270	KIT VALV.SIC. (39404720)	1
C13	39813220	KIT 5 REG.PORT.15Lt. (36902100)	1
D01	39819680	KIT GUARN.CALD. Sr.ABF7	1
D02	39808471	KIT PRESE (35101310-35101323)	1
D03	39817990	KIT CURVA USC.FUMI (33301610)	1
D04	39819690	KIT DIAFR.FUMI (32700870-890)	1
D05	39817510	KIT PRESS.DIFF.ARIA (36402050)	1
D06	39818020	KIT VENTIL. (36601871)	1
D07	39819700	KIT 15 UG.1,35 m. (34009821)	1
D09	39819430	KIT ELETTRODO ACC. (36702890)	1
D10	39811330	KIT SPIA SILICONE (35102230)	1
D11	39819720	KIT ISOL.CAM.COMB. Sr.ABF7	1
D12	39819730	KIT BRUC.15R.m. (37608930)	1
D13	39819620	KIT VALV.GAS (36800610)	1

LISTA PEZZI 0ABF7B4A		DOMIproject F32 m. (A4)	
POS.	CODICE	DESC.	QT.
A01	39819660	KIT MANTELLO (31115970)	1
B01	39819500	KIT 2 MANOPOLE (35012090)	1
B02	39818210	KIT IDROMETRO (36402070)	1
B03	39819510	KIT MASCHERINA (35011990)	1
B04	39819520	KIT SCATOLA EL. (35012240)	1
B05	39819530	KIT SCHEDA EL. (36507990)	1
C01	39819670	KIT SCAMB.BITERM. (37404120)	1
C02	39819550	KIT SONDA TEMP. (36200730)	1
C03	39810230	KIT SONDA TEMP.SAN. (36200640)	1
C04	39818260	KIT PRESSOST.H2O (39404710)	1
C05	39809690	KIT VASO ESP.10Lt. (36802740)	1
C06	39818550	KIT FLUSSOST.ELTEK (36400710)	1
C07	39818280	KIT RUBIN.CARICO (36902150)	1
C08	39813230	KIT 5 FILTRI FLUSS. (39402940)	1
C09	39818230	KIT 5 VALV.N/R (39404740)	1
C10	39818450	KIT POMPA AO/FX3FPL (39404220)	1
C11	39818220	KIT V.ARIA (39404380-39404730)	1
C12	39818270	KIT VALV.SIC. (39404720)	1
C13	39813220	KIT 5 REG.PORT.15Lt. (36902100)	1
D01	39819680	KIT GUARN.CALD. Sr.ABF7	1
D02	39808471	KIT PRESE (35101310-35101323)	1
D03	39817990	KIT CURVA USC.FUMI (33301610)	1
D04	39819690	KIT DIAFR.FUMI (32700870-890)	1
D05	39817510	KIT PRESS.DIFF.ARIA (36402050)	1
D06	39818020	KIT VENTIL. (36601871)	1
D07	39819700	KIT 15 UG.1,35 m. (34009821)	1
D09	39819430	KIT ELETTRODO ACC. (36702890)	1
D10	39811330	KIT SPIA SILICONE (35102230)	1
D11	39819720	KIT ISOL.CAM.COMB. Sr.ABF7	1
D12	39819730	KIT BRUC.15R.m. (37608930)	1
D13	39819620	KIT VALV.GAS (36800610)	1

LISTA PEZZI 0ABF7B5A		DOMIproject F32 m. (A5)	
POS.	CODICE	DESC.	QT.
A01	39819660	KIT MANTELLO (31115970)	1
B01	39819500	KIT 2 MANOPOLE (35012090)	1
B02	39818210	KIT IDROMETRO (36402070)	1
B03	39819510	KIT MASCHERINA (35011990)	1
B04	39819520	KIT SCATOLA EL. (35012240)	1
B05	39819530	KIT SCHEDA EL. (36507990)	1
C01	39819670	KIT SCAMB.BITERM. (37404120)	1
C02	39819550	KIT SONDA TEMP. (36200730)	1
C03	39810230	KIT SONDA TEMP.SAN. (36200640)	1
C04	39818260	KIT PRESSOST.H2O (39404710)	1
C05	39809690	KIT VASO ESP.10Lt. (36802740)	1
C06	39818550	KIT FLUSSOST.ELTEK (36400710)	1
C07	39818280	KIT RUBIN.CARICO (36902150)	1
C08	39813230	KIT 5 FILTRI FLUSS. (39402940)	1
C09	39818230	KIT 5 VALV.N/R (39404740)	1
C10	39818450	KIT POMPA AO/FX3FPL (39404220)	1
C11	39818220	KIT V.ARIA (39404380-39404730)	1
C12	39818270	KIT VALV.SIC. (39404720)	1
C13	39813220	KIT 5 REG.PORT.15Lt. (36902100)	1
D01	39819680	KIT GUARN.CALD. Sr.ABF7	1
D02	39808471	KIT PRESE (35101310-35101323)	1
D03	39817990	KIT CURVA USC.FUMI (33301610)	1
D04	39819690	KIT DIAFR.FUMI (32700870-890)	1
D05	39817510	KIT PRESS.DIFF.ARIA (36402050)	1
D06	39818020	KIT VENTIL. (36601871)	1
D07	39819700	KIT 15 UG.1,35 m. (34009821)	1
D09	39819430	KIT ELETTRODO ACC. (36702890)	1
D10	39811330	KIT SPIA SILICONE (35102230)	1
D11	39819720	KIT ISOL.CAM.COMB. Sr.ABF7	1
D12	39819730	KIT BRUC.15R.m. (37608930)	1
D13	39819620	KIT VALV.GAS (36800610)	1

LISTA PEZZI 0ABF7D2A		DOMIproject F32 gpl (A2)	
POS.	CODICE	DESC.	QT.
A01	39819660	KIT MANTELLO (31115970)	1
B01	39819500	KIT 2 MANOPOLE (35012090)	1
B02	39818210	KIT IDROMETRO (36402070)	1
B03	39819510	KIT MASCHERINA (35011990)	1
B04	39819520	KIT SCATOLA EL. (35012240)	1
B05	39819530	KIT SCHEDA EL. (36507990)	1
C01	39819670	KIT SCAMB.BITERM. (37404120)	1
C02	39819550	KIT SONDA TEMP. (36200730)	1
C03	39810230	KIT SONDA TEMP.SAN. (36200640)	1
C04	39818260	KIT PRESSOST.H2O (39404710)	1
C05	39809690	KIT VASO ESP.10Lt. (36802740)	1
C06	39818550	KIT FLUSSOST.ELTEK (36400710)	1
C07	39818280	KIT RUBIN.CARICO (36902150)	1
C08	39813230	KIT 5 FILTRI FLUSS. (39402940)	1
C09	39818230	KIT 5 VALV.N/R (39404740)	1
C10	39818450	KIT POMPA AO/FX3FPL (39404220)	1
C11	39818220	KIT V.ARIA (39404380-39404730)	1
C12	39818270	KIT VALV.SIC. (39404720)	1
C13	39813220	KIT 5 REG.PORT.15Lt. (36902100)	1
D01	39819680	KIT GUARN.CALD. Sr.ABF7	1
D02	39808471	KIT PRESE (35101310-35101323)	1
D03	39817990	KIT CURVA USC.FUMI (33301610)	1
D04	39819690	KIT DIAFR.FUMI (32700870-890)	1
D05	39817510	KIT PRESS.DIFF.ARIA (36402050)	1
D06	39818020	KIT VENTIL. (36601871)	1
D08	39819710	KIT 15 UG.0,79 gpl (34013300)	1
D09	39819430	KIT ELETTRODO ACC. (36702890)	1
D10	39811330	KIT SPIA SILICONE (35102230)	1
D11	39819720	KIT ISOL.CAM.COMB. Sr.ABF7	1
D13	39819620	KIT VALV.GAS (36800610)	1

<p><u>DESCRIZIONE MODIFICHE:</u></p> <p>_____</p> <p>_____</p> <p>_____</p> <p>_____</p>	<p><u>NOTE TECNICHE:</u></p>	<div style="border: 1px solid black; padding: 10px; margin: 0 auto; width: 80%;"> <p>Firma</p> <p>DI CARLO Cristian</p> </div>
---	-------------------------------------	--